

Specialized Manufacturer  
of Functional Adhesives



주식회사 **하나이화**  
HANA CHEMICAL CO.,LTD



01

**Company Overview**

02

**Management Policy**

03

**Company History**

04

**Business Areas**

05

**Organizational Chart**

06

**Facility Status**

# Company Overview



## Company Name

### CEO

- HANA CHEMICAL CO.,LTD
- WON-CHAN CHUNG, JI-WOONG CHUNG

## Address

### Contact

- 25-19, Samsunmun-gil, Jangan-myeon, Hwaseong-si, Gyeonggi-do, Republic of Korea
- TEL (+82) 031-351-5010, FAX (+82) 031-351-5311

## Establishment

### Website

- 1999. 01. 15
- <https://www.hanachemical.co.kr>

## Main Product

### Main Clients

- Acrylic and Urethane, Rubber-based Adhesives
- 3M OEM, Samsung Electronics Vendor, Solar Film Manufacturer, etc.

# Management Policy



**Company that grows with its customers, based on talent and technology**

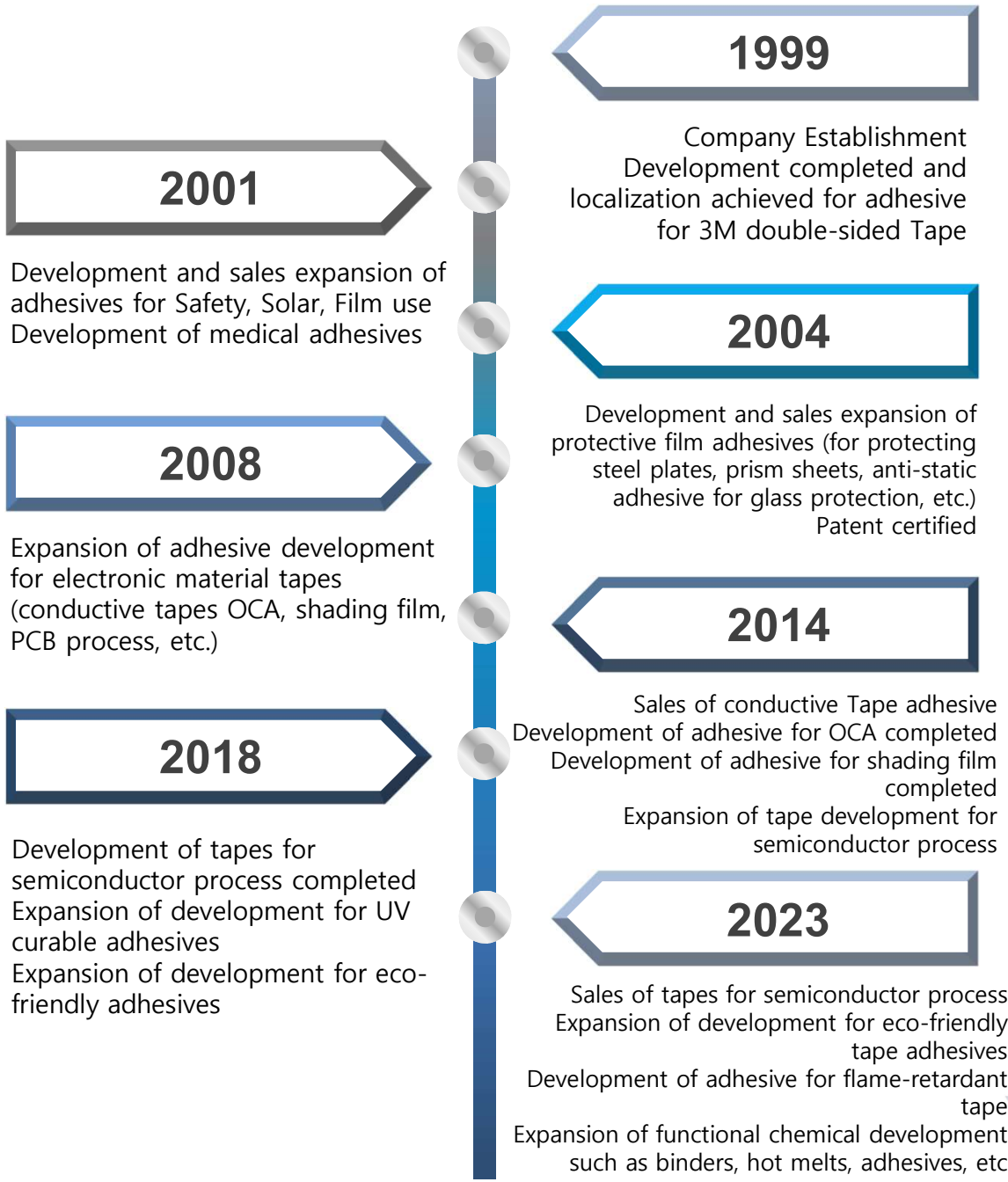
## **Technology Development**

**Contributes to the domestic production of functional adhesives through continuous investment in technology development and efforts to cultivate excellent talent.**

## **Customer Satisfaction**

**Maintains solid trust relationships through thorough quality control and fast customer response**

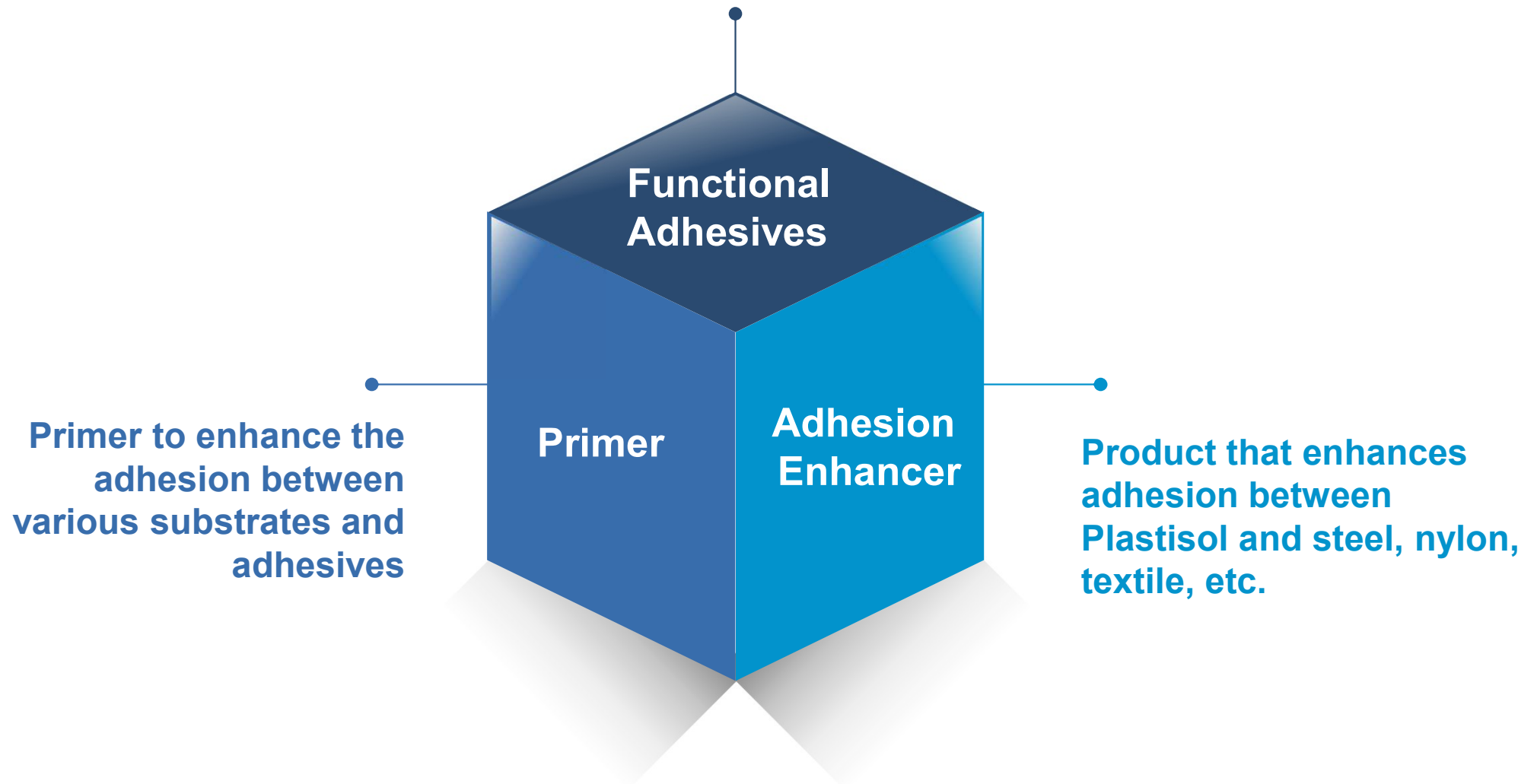
# Company History



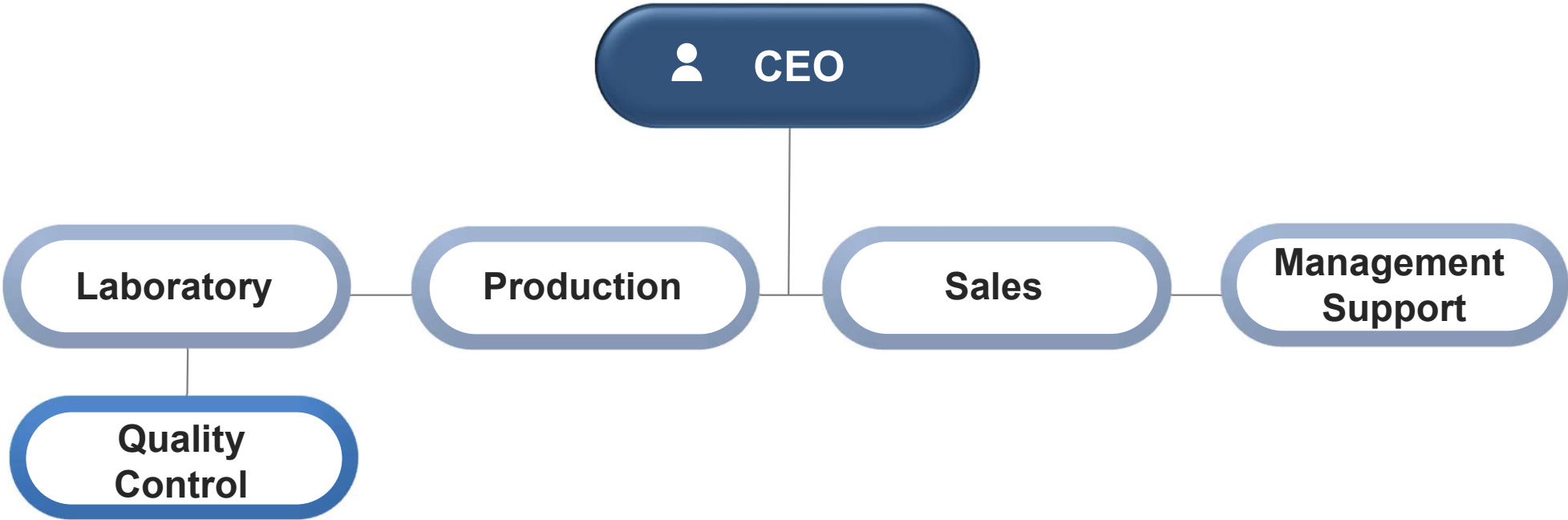
# Business Areas



**Various functional Acrylic Adhesives**  
**Urethane Adhesives for Protective Film and Film Lamination**  
**Rubber-based Adhesives**



# Organizational Chart



Total	Laboratory	Production	Sales	Sales	Management Support
21	6	2	7	1	5

# Facility Status



Reactor	Count
10-ton Reactor	1 ea
5-ton Reactor	3 ea
3-ton Reactor	5 ea
2-ton Reactor	1 ea
0.5-ton Reactor	1 ea (pilot reactor)
0.2-ton Reactor	1 ea (pilot reactor)
High-speed Mixer	3 ea